



# Principles for Responsible Artificial Intelligence



# Contents

---

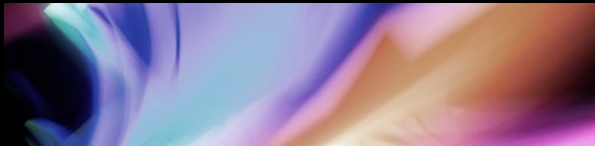
OUR MISSION  
AND PRINCIPLES

03

---

TRANSPARENCY  
AND EXPLAINABILITY

04



---

FAIRNESS AND  
BIAS MITIGATION

05

---

DATA PRIVACY  
AND SECURITY

06

---

RELIABILITY, SAFETY,  
AND CONTROL

07

---

HUMAN-CENTERED  
APPROACH

08



---

ETHICAL  
PARTNERSHIPS

09

---

ACCOUNTABILITY  
AND GOVERNANCE

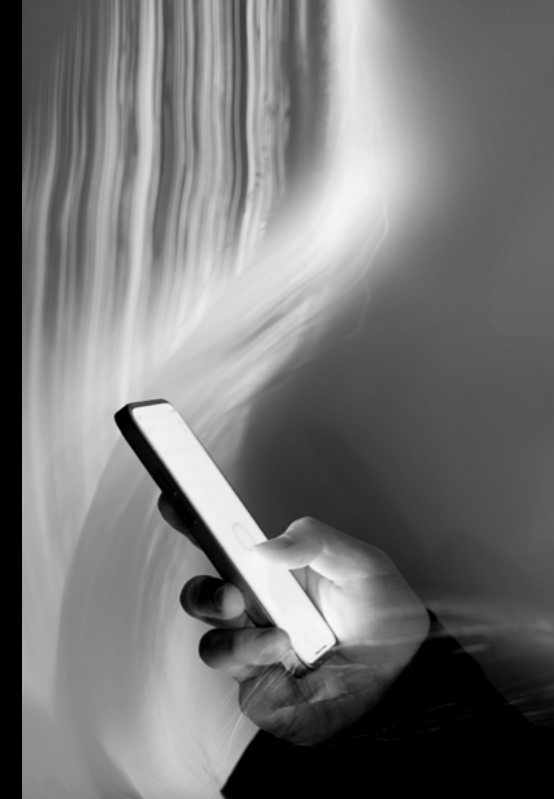
10

# Our Mission

At Commvault, we recognize the transformative potential of Artificial Intelligence (“AI”) and its impact on the future of technology and society. As we harness the power of AI in our products and services, we are committed to upholding ethical standards and ensuring responsible AI deployment. We firmly believe that AI should be developed, deployed, and used in a manner that prioritizes the well-being of individuals, communities, and the environment.

## Principles

To guide our practices and shape our approach to AI, we have established the following principles which embody our dedication to ethical AI development and deployment.

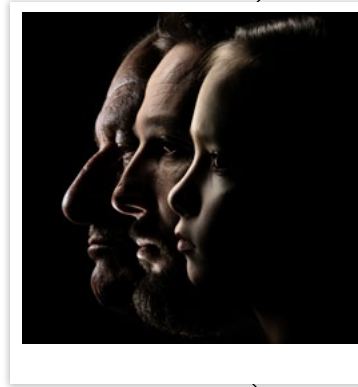


# Transparency and Explainability



We firmly believe that AI systems should not be enigmatic black boxes. Instead, we strive to make our AI systems transparent and understandable to all users and stakeholders. This means providing clear explanations for AI-generated decisions whenever appropriate. By doing so, individuals will have a better grasp of how their data is used, why certain decisions are made, and how the AI system arrives at specific outcomes.

Our goal is that such transparency fosters trust and ensures that AI enhances decision-making processes rather than obscuring them.



# Fairness and Bias Mitigation

Recognizing that AI technologies can inadvertently perpetuate biases and discrimination, we take great care to design our AI systems in a manner that minimizes biases and avoids discriminatory practices based on race, gender, age, or any other characteristic. We will actively invest in research and development efforts to detect and address potential biases within our AI algorithms. Our commitment to fairness extends to ensuring equitable treatment for all individuals, promoting diversity and inclusion, and contributing to a more just and equal society.



# Data Privacy and Security

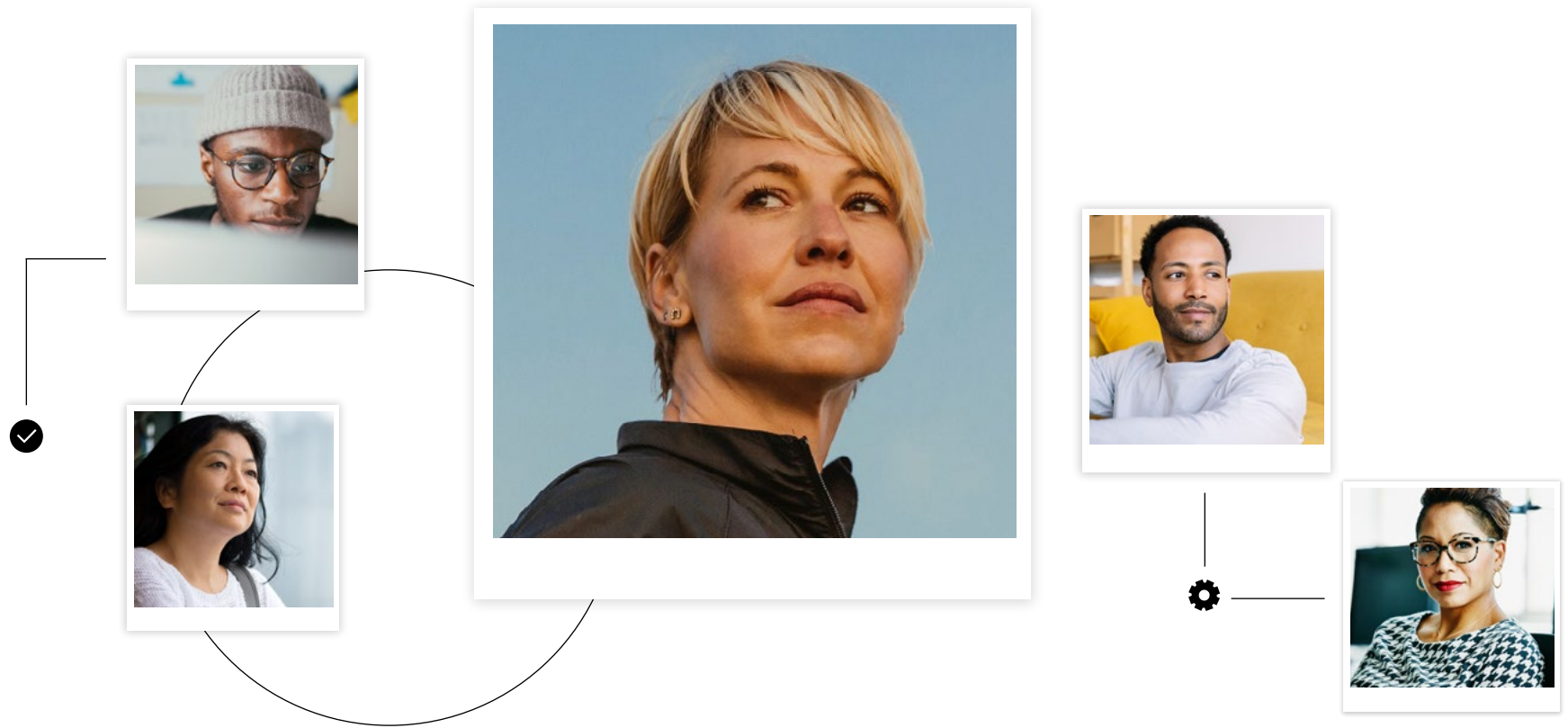
Safeguarding the privacy and security of personal data and sensitive information is of paramount importance to us. We embed privacy and security by design principles into our Software Development Life Cycle (SDLC) and adhere to rigorous data protection measures, ensuring the highest standards of data security throughout the AI life cycle. We strive to be transparent about our data processing activities by continuously reviewing our Privacy Policy to ensure it is up-to-date and in alignment with international privacy laws and standards.

# Reliability, Safety, and Control

AI systems should be reliable, safe, and under human control. We prioritize the reliability and safety of our AI systems by implementing rigorous testing, quality assurance protocols, and security measures. Our aim is to ensure that these systems operate as intended, are resilient to attacks or misuse, and do not pose risks to individuals or society at large.



We incorporate explicit design principles to maintain control over AI systems, allowing for a kill-switch or similar mechanisms to shut down the system in case of emergencies or unexpected behavior, ensuring that human judgment remains paramount.



# Human-Centered Approach

We firmly believe that AI should augment human capabilities, not replace them. A human-centered approach is at the core of our AI development philosophy. We actively seek to collaborate with users and stakeholders to ensure that our AI solutions align with their needs, values, and aspirations. By incorporating human feedback, we can create AI technologies that enhance human potential, improve user experiences, and contribute positively to societal well-being.

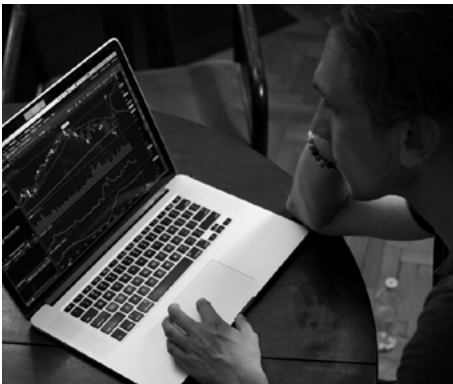


# Ethical Partnerships

We hold ourselves and our collaborators to the highest ethical standards. In all our collaborations, we conduct thorough evaluations and due diligence to ensure that our partners and service providers share our commitment to responsible AI practices. We engage with those who demonstrate a shared responsibility for promoting the well-being of individuals and society at large.



Our partnerships are founded on trust, integrity, and a collective vision for the ethical advancement of AI technologies.



# Accountability and Governance

Establishing clear lines of accountability is fundamental to ensuring the ethical development, deployment, and use of AI technologies. Our governance framework includes comprehensive risk and impact assessments to identify and address potential ethical concerns proactively. Regular audits and evaluations provide further insights into the effectiveness of our ethical AI practices. We take responsibility for any unintended consequences of our AI systems and are committed to addressing and rectifying any issues promptly.



---

By adhering to these principles, Commvault is dedicated to advancing AI technologies that contribute positively to society, while responsibly managing the challenges and risks posed by artificial intelligence. We invite stakeholders, customers, and industry peers to join us in this journey towards a more ethical and responsible AI future.

To learn more, visit [commvault.com](https://commvault.com)

[commvault.com](https://commvault.com) | 888.746.3849 | [get-info@commvault.com](mailto:get-info@commvault.com)

