

Commvault® Cloud for Atlassian Jira

Atlassian Jira is the system of record for how work gets planned, tracked, and delivered across IT, engineering, operations, and business teams. It contains critical data that directly impacts productivity, service delivery, and compliance.

When data is lost or compromised, organizations can face stalled projects, missed SLAs, audit failures, and delayed releases. Relying on native capabilities alone or manual processes can create critical protection and recovery gaps, leaving data exposed to accidental deletion, misconfiguration, and malicious attacks.

PURPOSE-BUILT PROTECTION FOR JIRA AT ENTERPRISE SCALE

Commvault delivers enterprise-scale protection and recovery for Jira and Jira Service Management environments, helping teams protect critical planning and collaboration data from cyberattacks, disasters, and operational mistakes.



AUTOMATE PROTECTION

Eliminate manual effort and reduce risk with policy-driven backups that can scale across teams and projects.



SECURE CRITICAL JIRA DATA

Safeguard data from ransomware and unauthorized changes with immutable backups, isolated cloud storage, and zero-trust design.



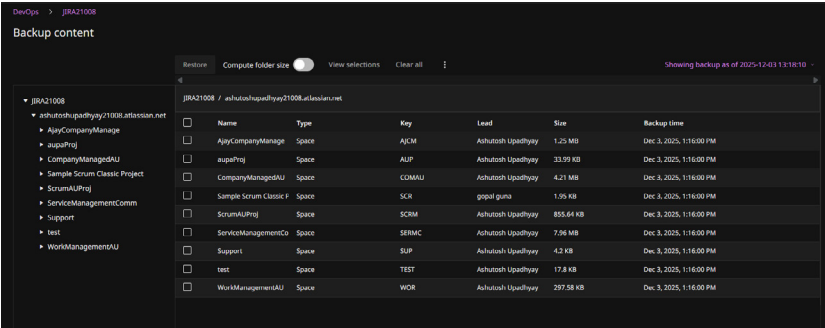
ENABLE GRANULAR RECOVERY

Recover quickly from data loss or cyber incidents to help minimize downtime, keep teams productive, and projects on track.

HOW IT WORKS

AUTOMATE PROTECTION

- Continuous protection for Jira spaces, work items, configurations, and attachments
- Automatic discovery and protection of newly created work items and spaces
- Custom backup schedules and retention policies to help meet business and compliance requirements
- No scripts, manual exports, or reliance on once-per-day snapshots



Backup content

Restore Compute folder size View selections Clear all Showing backup as of 2025-12-03 13:38:50

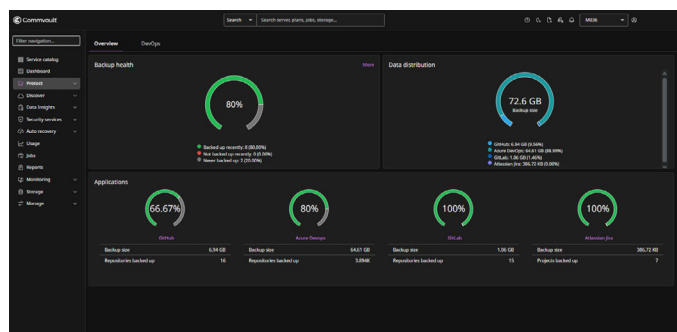
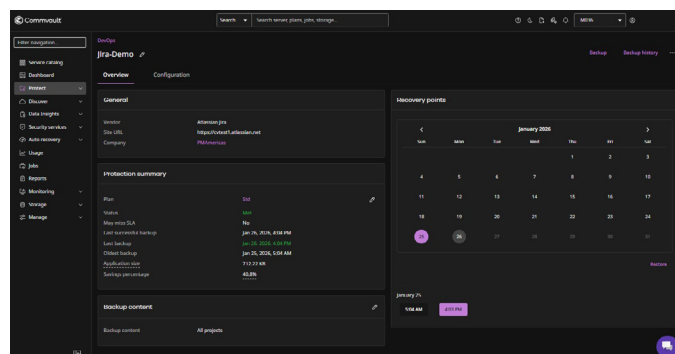
	Name	Type	Key	Lead	Size	Backup time
▶ JIRA21008						
▶ ashutoshupadhyay@jira21008.atlassian.net						
▶ AjayCompanyManage	AjayCompanyManage	Space	AJCM	Ashutosh Upadhyay	1.25 MB	Dec 3, 2025, 1:16:00 PM
▶ anupProj	anupProj	Space	AUP	Ashutosh Upadhyay	33.99 KB	Dec 3, 2025, 1:16:00 PM
▶ CompanyManagedAU	CompanyManagedAU	Space	COMAU	Ashutosh Upadhyay	4.21 MB	Dec 3, 2025, 1:16:00 PM
▶ Sample Scrum Classic Project	Sample Scrum Classic P	Space	SCR	gopal gura	1.09 KB	Dec 3, 2025, 1:16:00 PM
▶ ScrumAUProj	ScrumAUProj	Space	SCRM	Ashutosh Upadhyay	855.64 KB	Dec 3, 2025, 1:16:00 PM
▶ ServiceManagementComm	ServiceManagementCo	Space	SERMC	Ashutosh Upadhyay	7.06 MB	Dec 3, 2025, 1:16:00 PM
▶ Support	Support	Space	SUP	Ashutosh Upadhyay	4.2 KB	Dec 3, 2025, 1:16:00 PM
▶ test	test	Space	TEST	Ashutosh Upadhyay	17.8 KB	Dec 3, 2025, 1:16:00 PM
▶ WorkManagementAU	WorkManagementAU	Space	WOCR	Ashutosh Upadhyay	297.58 KB	Dec 3, 2025, 1:16:00 PM

BUILT-IN CYBER RESILIENCE

- Immutable, air-gapped backups stored in a secure, Commvault-managed environment, isolated from the production Jira environment
- Centralized control, audit logging, and extended retention help support compliance mandates and regulatory reporting
- End-to-end encryption, privacy protocols, and zero-trust access controls

FAST, GRANULAR RECOVERY

- Granular point-in-time recovery to restore only what was lost, without needing to recover everything
- Restore individual spaces, work items, and attachments, or entire Jira sites, with flexible in-place and out-of-place restore options
- Preservation of parent-child relationships and dependencies by restoring both spaces and configurations



CLOSE THE GAP BETWEEN PLANNING AND EXECUTION

Protection for Jira, Azure DevOps, GitHub, and GitLab in a single solution, providing unified resilience across the entire DevOps lifecycle – from planning and issue tracking to code and delivery.

Fewer tools. Consistent policies. Faster recovery when incidents happen.

[Explore Commvault Cloud for DevOps](#)

To learn more about how Commvault can help you strengthen resilience across your Jira environment, visit commvault.com/supported-technologies/atlassian-jira.

To learn more, visit commvault.com